

The ultimate solution for your large-format archive

Productivity scanning **solutions**



Build your digital archive in no time

Big archive tasks need speed. Not just “inches per second” but actual throughput. Contex ScanStation is designed specifically for productivity by reducing scan time with fast scanners and scanning processes.

With Contex designed imaging technology, document handling, archiving and productivity-boosting features, you get best-in-class image quality and the fastest and most efficient way to scan, copy, file and archive wide format images, drawings, documents and records.

The all-included solution elements

The Contex ScanStation includes a high-volume scanner, touch screen, intuitive Nextimage 4 REPRO software for scan + copy and a height adjustable stand with the option to operate the screen from left or right.



Contex ScanStation is recommended for high productivity



IQ Quattro 4450 ScanStation
IQ Quattro 4490 ScanStation



HD 5450 PLUS ScanStation



HD Ultra i4250s ScanStation
HD Ultra i4290s ScanStation



Contex HD Ultra awarded Best Wide Format Scanner for third consecutive year

	IQ Quattro 4450 ScanStation	IQ Quattro 4490 ScanStation	HD Ultra i4250s ScanStation	HD Ultra i4290s ScanStation	HD 5450 PLUS ScanStation
Scanning Speed* (inch/sec.): Scanner speed while scanning 36-inch wide document.					
RGB Color	7 ips 200 dpi	14 ips 200 dpi	4 ips 200 dpi	8 ips 200 dpi	3 ips 400 dpi (Turbo)
Upgradable	Yes. To 14 ips	-	Yes. To 8 ips	-	-
Grayscale / Monochrome	14 ips 200 dpi	14 ips 200 dpi	12 ips 200 dpi	12 ips 200 dpi	12 ips 400 dpi (Turbo)
Maximum Scan Width	44 inch (1118 mm)		42 inch (1067mm)		54 inch (1372 mm)
Maximum Media Width	47 inch (1194 mm)		44 inch (1120 mm)		56 inch (1422 mm)
Optical Resolution	1200 dpi		1200 dpi		508 dpi
Maximum Resolution	9600 dpi		9600 dpi		9600 dpi
Technology	Contex CleanScan CIS		5 x 4 liniar color CCD's (R,G,B and Gray)		4 x 4 liniar color CCD's (R,G,B and Gray)
Maximum Media Thickness	2 mm		0.6 inch (15 mm)		0.6 inch (15 mm)
Accuracy	0.1% +/- 1 pixel		0.1% +/- 1 pixel		0.1% +/- 1 pixel
Data Capture (color/mono)	48-bit / 16-bit		48-bit / 16-bit		48-bit / 16-bit
Color Space	Adobe RGB / Device RGB / RAW RGB / sRGB		Adobe RGB / Device RGB / RAW RGB / sRGB		sRGB
USB	USB and Gigabit Ethernet with xDTR2		USB and Gigabit Ethernet with xDTR2		USB
Gigabit Ethernet with xDTR2	•		•		-
Energy Star compliant	•		•		-
Stand and touch screen:					
Working Height	32.8 / 33.8 / 34.8 inch (834 / 859 / 884 mm)		36.3 / 37.3 / 38.3 inch (922 / 947 / 972 mm)		36.0 / 37.0 / 38.0 inch (915 / 940 / 965 mm)
Touch Screen	17" TFT active matrix LCD / 1280 x 1024 pixels				
Screen Mounting	Optional. Left or Right side				
PC Platform	Max PC size/weight: 490x400x107mm, 12kg (19.3x15.7x4.21in, 26lbs.)				
Full-featured Nextimage REPRO software included:					
Language versions	Chinese, Dutch, English, French, German, Italian, Japanese, Korean, Polish, Russian, Spanish				
Operating system	32 and 64-bit: Windows 8, 7, Vista, and XP				
Nextimage TWAIN	32-bit TWAIN application driver included for use with EDM and other imaging software				
Fileformats	TIF, JPG, PDF, PDF/A, DWF, CALS, BMP, JPEG-2000(JP2), JPEG2000 Extended(JPX), TIF-G3, TIF-G4, others				
Auto Naming Templates	Configurable Counters, Date, Time and other. Use in folder and filenames or both				
Software ³	AutoCAD® , Microstation™, ArcGIS™ and all other CAD, GIS and other image editing / storage applications				
Power Requirements	100-240V, 60/50Hz, 80W		100-240V, 60/50Hz, 80W		100-240V, 60/50Hz, 180w
Scanner Weight & Dimensions	27 kg, LxWxH: 53.1 x 18.9 x 6.3 inches (135.0 x 48.0 x 16.1 cm)		48 kg, LxWxH: 52.8 x 18.7 x 7.9 inches (134 x 47.5 x 20 cm)		79 kg, LxWxH:67 x 19 x 7 inches (169 x 47 x 18 cm)
Certifications/compliance	CE, cUL, Customs Union, VCCI, FCC Class A, RoHS, ENERGY STAR certified		RoHS, cUL, CE, Customs Union, CCC, VCCI, KC, Ukr, BSMI, ENERGY STAR certified		RoHS, cUL, CE, GOST-R, CCC, VCCI, KC, Ukr

1 Scanning speeds depend on document width and computer configuration. Contex recommends Intel Core Duo, Core 2 Duo, or better processors, 2GB RAM, Hi-speed USB2.
Speed tests performed using Nextimage software, PC with Intel Core i5-2500 Quad processor, 8GB RAM, Hi-speed USB2, 7200rpm HDD, Windows 7 64-bit Ultimate.
2 Bit depth for: Data Capture / Scanner Processing / PC Processing / Image File.
Create an optional 48-bit TIFF image

3 Contex applications create industry standard raster file formats that can be used in any CAD or GIS application.

All trademarks remain the property of their respective holders, and are used only to directly describe the product being provided. Their use in no way indicates any relationship between Contex A/S and the holders of the said trademarks.

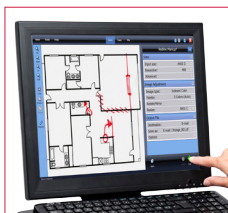
Designed for the **best possible productivity**, reliability, quality and versatility — day after day.



Height adjustable stand for optimal ergonomics



Awarded Nextimage software to ensure image quality for both archival and printing



Standard Windows application or intuitive touch-screen mode



Choice of operating the touch-screen from left or right side

Contex Head Office
Phone: +45 4814 1122
info@contex.com

Contex Americas
Maryland, USA
Phone: +1 (703) 964 9850
salesamericas@contex.com

Contex EMEA & AP
Copenhagen, Denmark
Phone: +45 4814 1122
emea-ap@contex.com

Contex Singapore
Phone: +65 6853 8129
apac@contex.com

Contex China
Shanghai
Phone: +86 21 6422 2525
info-china@contex.com

Contex Japan
Tokyo
Phone: +81 3 3669 5515
info-japan@contex.com



Read more at
contex.com

HP ready **EPSON ready** **Canon ready** **Océ ready**
Contex solutions work with all leading large-format printers.
For full list, see www.contex.com

Technology leadership
contex
WHEN IMAGING MATTERS